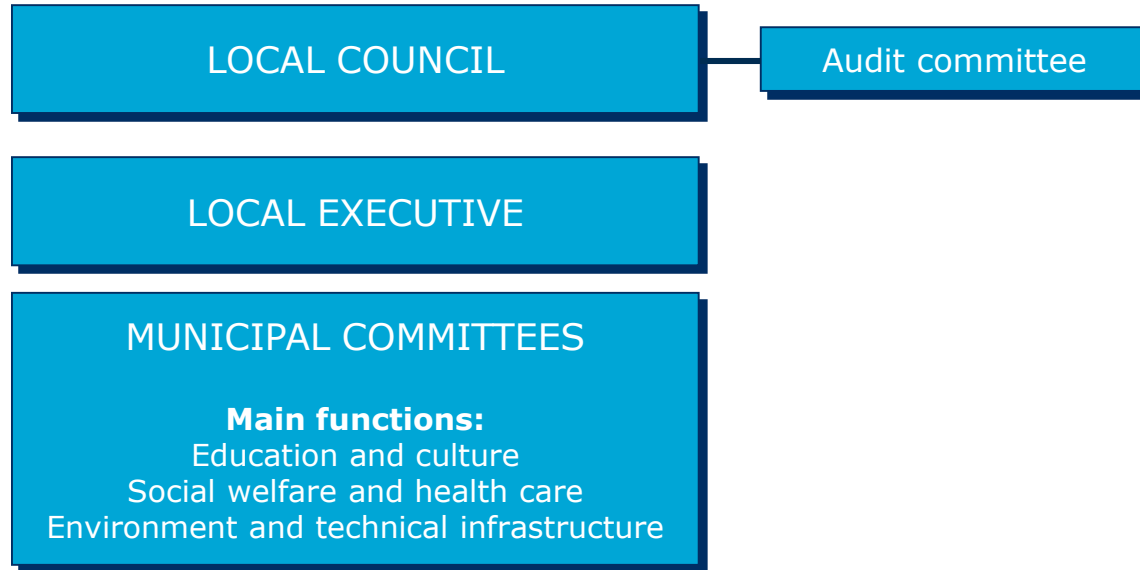


Association of Finnish Local and Regional Authorities

Functions of municipalities



Organisation of municipalities



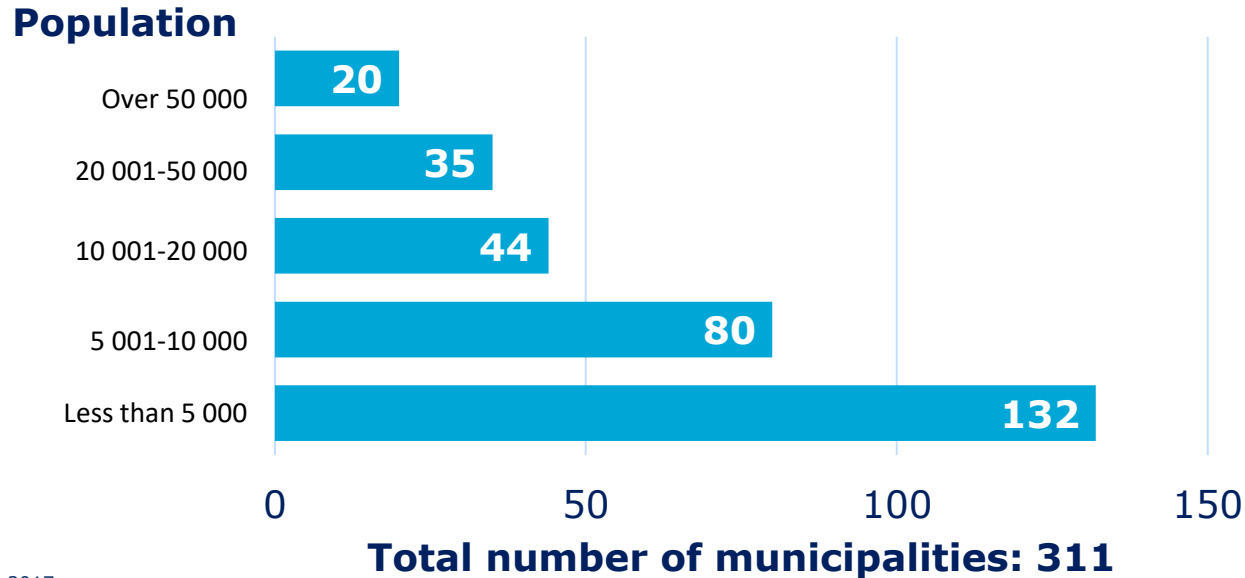


Municipalities and counties

Finland has 311 municipalities (2017)

- Municipalities are self-governing units where the highest decision-making authority is vested in local councils elected by residents.
- Local authorities provide the basic public services for their residents, the most important of which relate to social welfare and health care, education and culture, the environment and technical infrastructure.
- The total expenditure of local and joint municipal authorities are approximately 45 billion euros (2017).
- Some 422,000 employees provide services for citizens (2015).

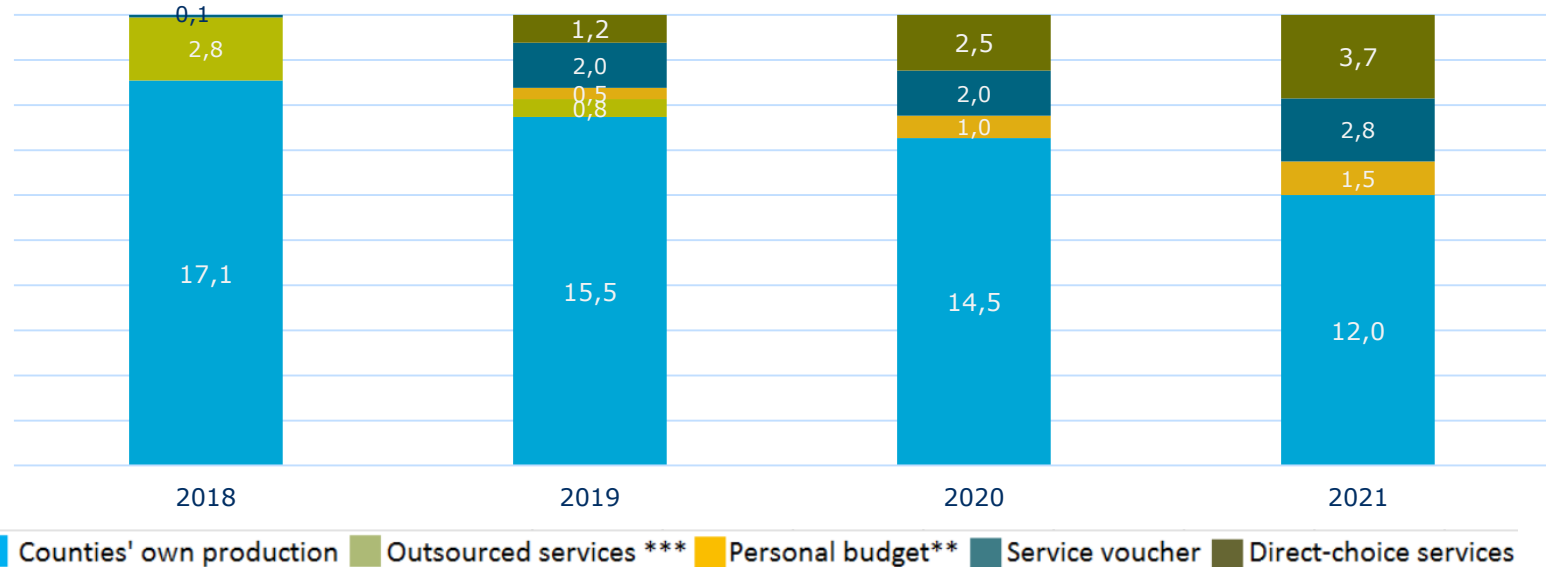
Number of municipalities by population size*, 2017



* Population on 31 Dec 2017
Source: Statistics Finland

More freedom of choice for clients

A market of an estimated €20 billion opens



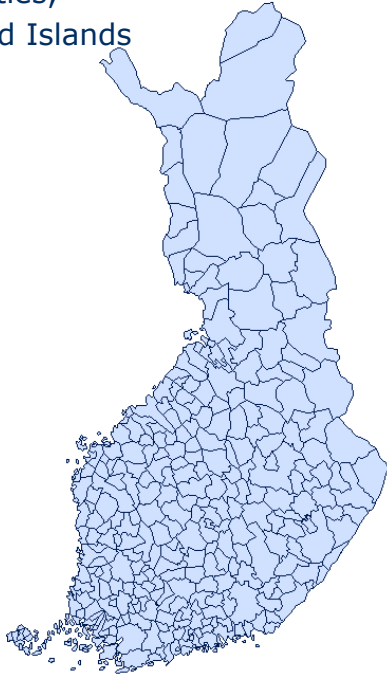
*The scope of direct-choice services is expected to be extended with corporatisation of the counties' activities.

**Personal budgeting will become effective as of 1 January 2019; in practice, it will not take full effect immediately.

***As of 2019, the counties can use their own discretion to determine the proportion of purchased services of their own production regarding the services outside the scope of freedom of choice.

Municipalities and counties, 1 January 2017

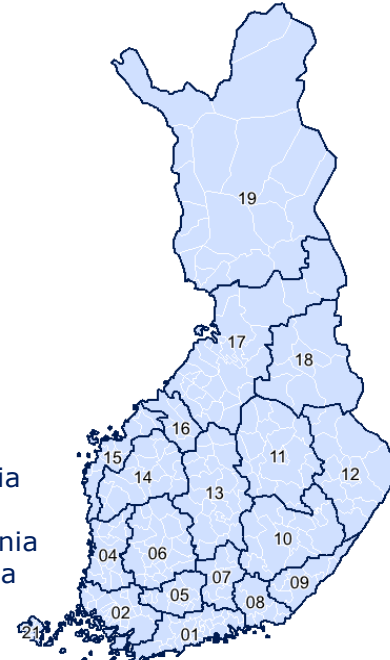
311 municipalities,
16 on the Åland Islands



Kuntarajat©MML 2017

Total of 18 counties
+ the Åland Islands

- 01 Uusimaa
- 02 Varsinais-Suomi
- 04 Satakunta
- 05 Kanta-Häme
- 06 Pirkanmaa
- 07 Päijät-Häme
- 08 Kymenlaakso
- 09 South Karelia
- 10 Etelä-Savo
- 11 Pohjois-Savo
- 12 North Karelia
- 13 Central Finland
- 14 South Ostrobothnia
- 15 Ostrobothnia
- 16 Central Ostrobothnia
- 17 North Ostrobothnia
- 18 Kainuu
- 19 Lapland
- 21 The Åland Islands



Kuntarajat©MML 2017



Municipal services

Education and cultural services for every citizen

- 540,000 pupils in basic education
- 212,000 children in municipal day care
- 170,000 students in vocational upper secondary education and training
- 140,000 students in universities of applied sciences
- 120,000 students in general upper secondary education, about 20,000 of whom are studying individual courses
- 130,000 children and young people in basic art education
- 60,000 children in pre-school education
- 35 000 municipal sports facilities
- 1,000 youth facilities and 240 youth workshops
- 800 libraries and 140 mobile libraries with approximately 10 library visits and 16 borrowings per resident annually
- 250 vocational cultural and art institutions
- 180 adult education centres with approximately 500,000 students
- 120 cultural houses and centres.

Social welfare and health care services for every citizen

- 24.1 million visits to health centres
- 3.8 million visits to health centre dentists
- 3.7 million care days in health centres
- 9.4 million outpatient visits in specialised health care
- 4.6 million care days in specialised health care
- 17,700 child welfare clients placed outside the home
- 74,000 children in child welfare open care
- 44,000 older people in municipal sheltered housing
- 67,000 older people receiving regular home care
- 45,300 recipients of informal care support
- 140,500 service recipients under the Services and Assistance for the Disabled Act
- 259,000 households receiving social assistance.

Local authorities provide services for all citizens

Local authorities

- ensure a favourable living environment for their residents through land use planning and land policy
- grant building permits for over 30,000 residential units annually and for over 35 million cubic metres
- provide district heating to 2.5 million people
- manage 2.5 million tons of municipal solid waste every year
- provide water services for over 5 million people
- maintain 260,000 rental dwellings
- maintain school facilities for 700,000 pupils
- own and maintain over 35,500 public buildings, with a floor area of over 35 million square metres.

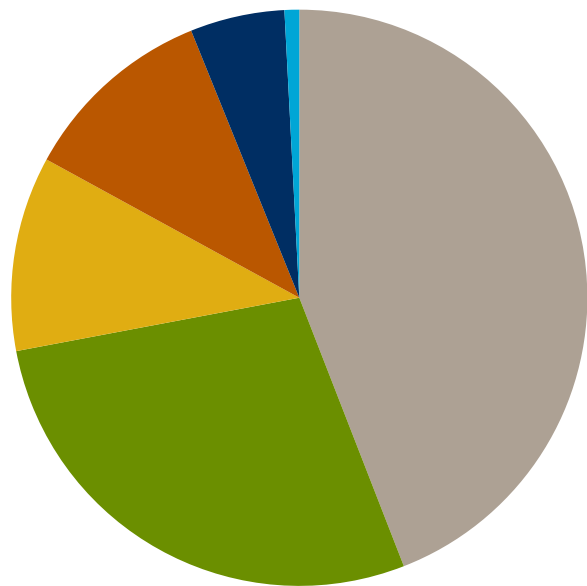
Local authorities provide services for all citizens

- They are responsible for the monitoring of some 14,000 environmental permits and process about 700 environmental permits annually.
- They maintain 30,000 km of roads, 11,000 km of private streets and 16,000 km of separate routes for non-motorised traffic.
- They provide high-quality water through a 100,000 km water supply network and collect wastewater by a 50,000 km sewer network, using environmentally friendly ways to treat the water.
- Joint municipal rescue departments perform about 100,000 rescue operations and deal with over 300,000 prehospital emergency care cases annually.
- Through safety training and education events rescue departments reach approximately 900,000 people and have over 160,000 supervisory duties annually.



Figures

Local and joint municipal authorities — expenditure

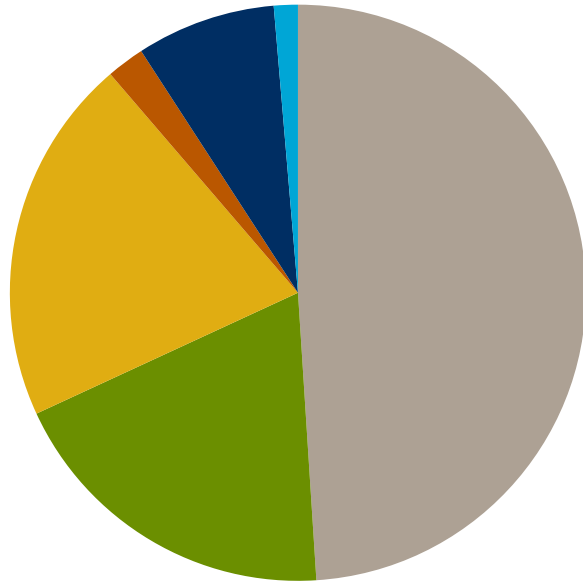


Estimate 2017 (external expenditure)

- Social welfare and health care 44%, €19.8 billion
- Education and cultural services 28%, €12.6 billion
- Other functions 11%, €4.9 billion
- Investment expenditure 11%, €4.9 billion
- Debt service 5%, €2.4 billion
- Other expenditure 1%, €0.4 billion

Total €44.9 billion

Local and joint municipal authorities — revenue

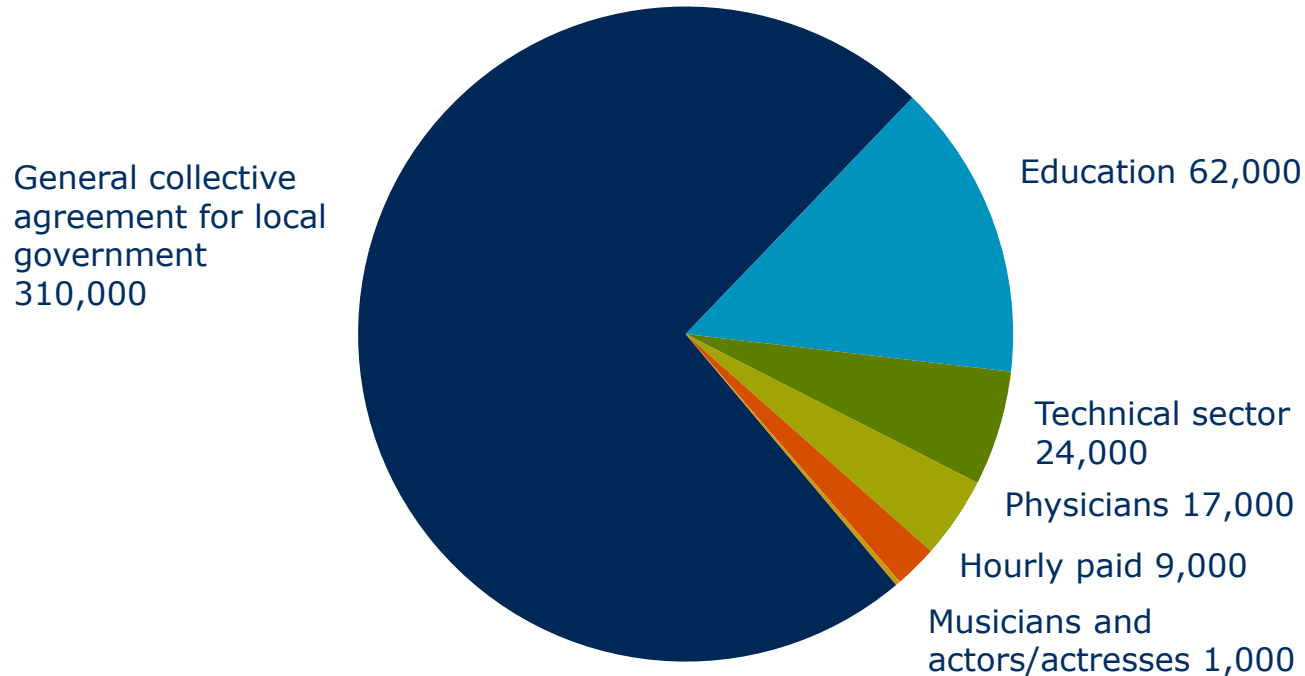


Estimate 2017 (external revenue)

- Tax revenue
49%, €21.9 billion
- Central govt transfers
19%, €8.5 billion
- Operating income
21%, €9.2 billion
- Investment income
2%, €1.0 billion
- Borrowing
8%, €3.5 billion
- Other income
1%, €0.6 billion

Total €44.7 billion

Municipal personnel by agreement sector, 2016 (total 422,000 persons)



Source: KT Local Government Employers: tilastolappu2016.pptx



Local elections 2017

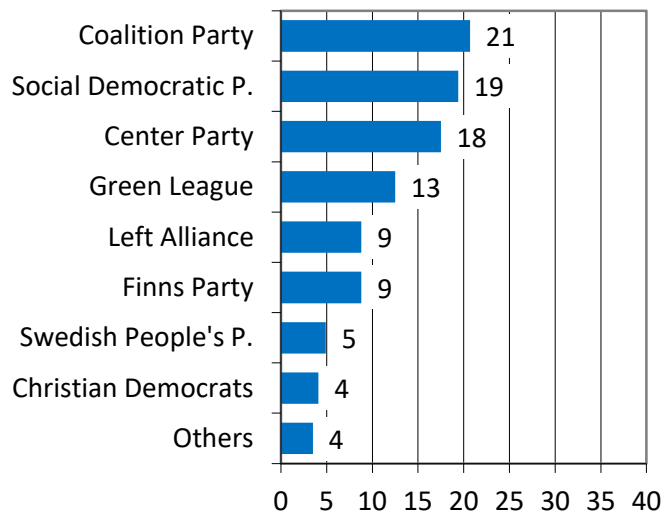
Voter turnout in local elections 2017

- by size of municipality

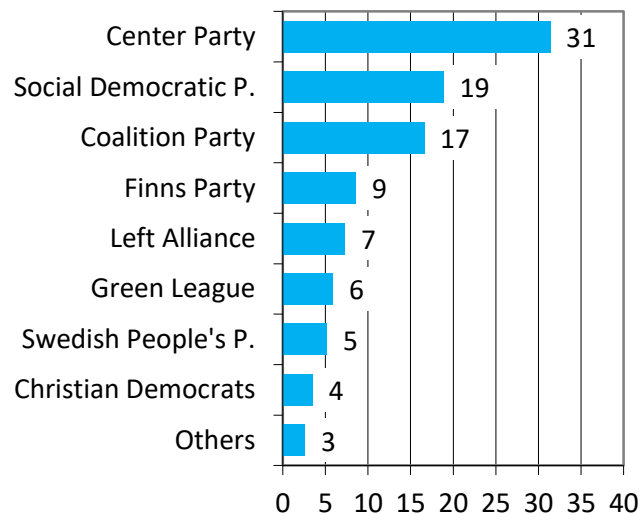
Municipality size class (population 30 Nov 2016)	Voter turnout	Voter turnout: minimum ja maximum
Fewer than 2 000 residents (n=32)	66.0	54.5 (Rautavaara) 82.6 (Kinnula)
2 000 – 5 000 as. (n=86)	62.8	52.2 (Kaavi) 78.1 (Korsnäs)
5 001 – 10 000 as. (n=79)	61.7	53.0 (Haapajärvi) 82.5 (Luoto)
10 001 – 20 000 as. (n=43)	60.5	52.1 (Pieksämäki) 76.6 (Pedersöre)
20 001 – 50 000 as. (n=34)	57.6	49.3 (Kajaani) 64.9 (Kurikka)
50 001 – 100 000 as. (n=12)	56.7	52.6 (Joensuu) 60.6 (Vaasa)
Over 100 000 residents (n=9)	58.2	52.3 (Vantaa) 61.8 (Helsinki)
Municipalities on mainland Finland Total (n=295)	58.9	49.3 (Kajaani) 82.6 (Kinnula)

Local elections results by party, 2017

Share of votes cast (%), by party



Share of council seats won (%), by party



The group 'Others' includes small parties and constituency associations.

Source: Statistics Finland.

The Association of Finnish Local and Regional Authorities

House of Municipalities
Toinen linja 14
00530 Helsinki, Finland
Tel.: +358 9 7711
kirjaamo@kuntaliitto.fi



facebook.com/kuntaliitto



twitter.com/kuntaliitto

