
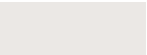



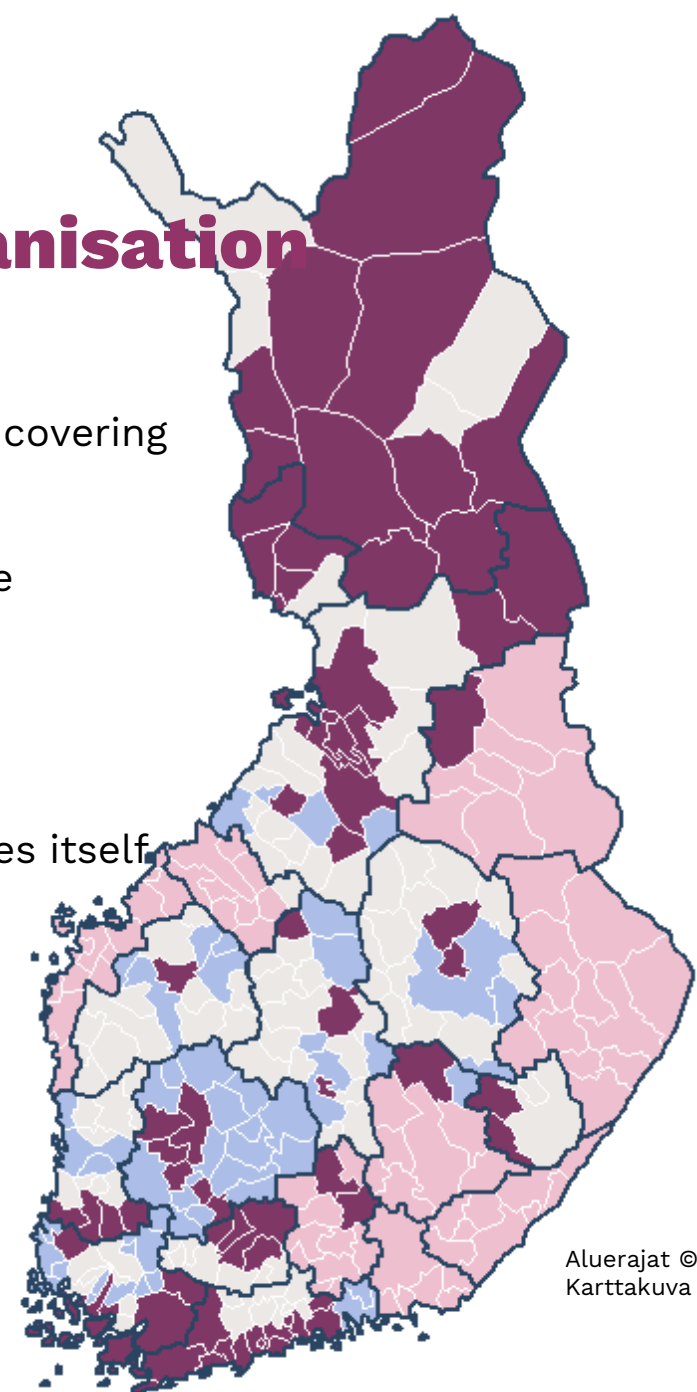


Finland's health and social services reform

The situation in spring 2022

Joint municipal authorities and the organisation of healthcare and social welfare 2022

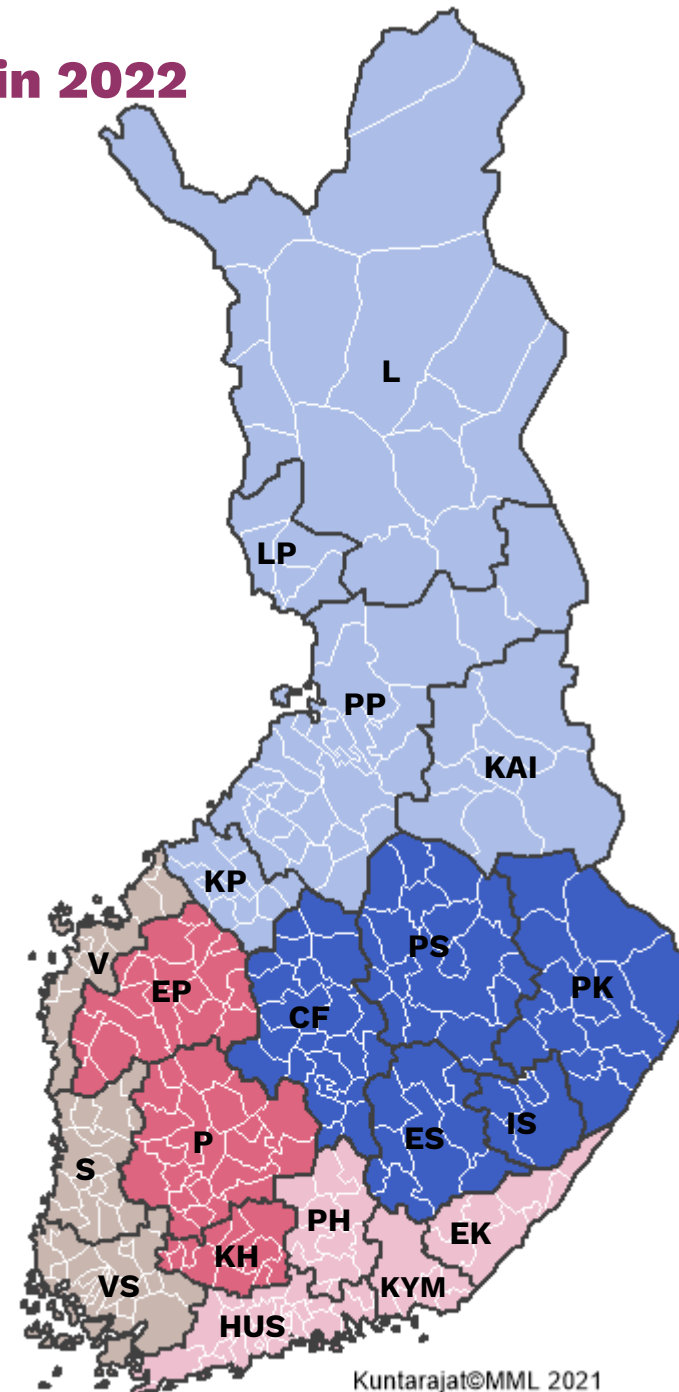
-  8 joint municipal authorities for healthcare and social welfare covering the entire region/most of the region
(74 municipalities, 19% of the population)
-  25 joint municipal authorities for healthcare and social welfare smaller than the region
(91 municipalities, 14% of the population)
-  23 local government co-management areas based on the host municipality model
(53 municipalities, 19% of the population)
-  Local authority organises healthcare and social welfare services itself
(75 municipalities, 48% of the population)
-  20 hospital districts of which 10 are separate organisations that mainly provide specialised medical care



Aluerajat © MML 2022
Karttakuva © Kuntaliitto/MS

Hospital districts and specific catchment areas (SCA) in 2022

SCA, Helsinki Univ. Hospital	2 198 182 residents	51 municipalities
Helsinki and Uusimaa	1 698 974	24
Etelä-Karjala	126 921	9
Kymenlaakso	162 812	6
Päijät-Häme	209 475	12
SCA, Kuopio Univ. Hospital	797 234 residents	65 municipalities
Pohjois-Savo	243 576	18
Etelä-Savo	97 514	9
Itä-Savo	39 877	4
Central Finland	252 730	21
Pohjois-Karjala	163 537	13
SCA, Oulu Univ. Hospital	736 563 residents	68 municipalities
Pohjois-Pohjanmaa	411 120	29
Kainuu	71 664	8
Keski-Pohjanmaa	77 114	10
Lapland	117 012	15
Länsi-Pohja	59 653	6
SCA, Tampere Univ. Hospital	902 681 residents	52 municipalities
Pirkanmaa	539 954	23
Etelä-Pohjanmaa	192 150	18
Kanta-Häme	170 577	11
SCA, Turku Univ. Hospital	869 004 residents	57 municipalities
Varsinais-Suomi	484 188	28
Satakunta	215 416	16
Vaasa	169 400	13
Mainland Finland	5 503 664 residents	293 municipalities
The Åland Islands	30 129 residents	16 municipalities
Finland, total	5 533 793 residents	309 municipalities



Reform of healthcare, social welfare and rescue services



Well-functioning structure will safeguard services for all

- Healthcare, social welfare and rescue services will be restructured to ensure the equal availability of services throughout Finland.
- Finland's population is ageing at a rapid pace and will need more services than previously. The decline in the birth rate will lead to a smaller number of working-age people and a reduction in tax revenue.
- Restructuring is necessary in order to curb the increase in costs and ensure equal health and social services for future generations.

Goals

- Reducing inequalities in health and wellbeing
- Safeguarding equal and quality health, social and rescue services for all
- Improving the availability and accessibility of services, especially primary services
- Ensuring the availability of skilled labour
- Responding to the challenges of changes in society
- Curbing the growth of costs
- Improving security

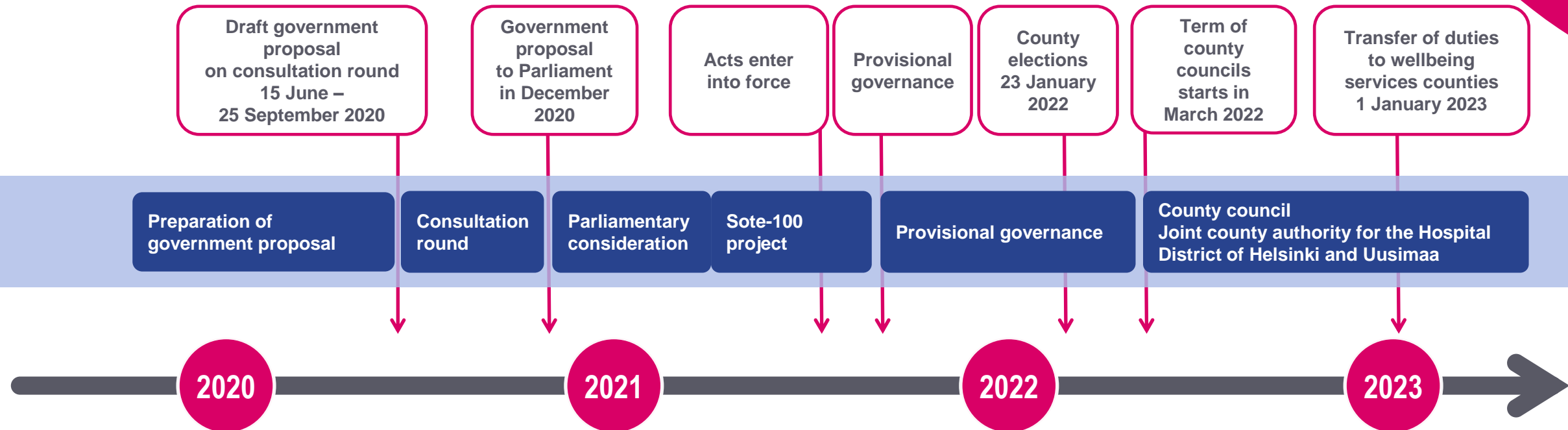
New wellbeing services counties

- The task of the wellbeing services counties will be to organise health, social and rescue services.
- The wellbeing services counties will be bodies governed by public law that exercise autonomy within their own areas.
- The highest decision-making body in each wellbeing services county will be a county council elected by popular vote. The county council will decide on a more detailed organisational structure.
- The Act on Wellbeing Services Counties will lay down provisions on the management and auditing of the administration and finances of the wellbeing services counties and on the means of participation and influence of residents.
- The provisions will be very similar to those laid down in the Local Government Act. Exceptions will include limited competence, investment guidance, the procedure for granting budget authority for borrowing, the centre of expertise for premises and property management, and the right of audit of the National Audit Office of Finland.





Timetable for the health and social services reform 2020–2022



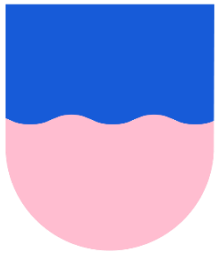
Development
of services

Future Health and Social Services Centres programme, development projects 2020–2022

Structural reform, development projects 2020–2021

Other development projects 2020–2022

Functions of Finnish local authorities and wellbeing services counties



Activities and functions of local authorities

Early childhood education

Pre-primary education and basic education

General upper secondary education and vocational education and training

Liberal adult education

Cultural and youth services, sport and physical activity

Infrastructure and the environment
Business and employment

Employment and economic development services (TE services)

Land use, housing and transport

Providers of vocational education and training

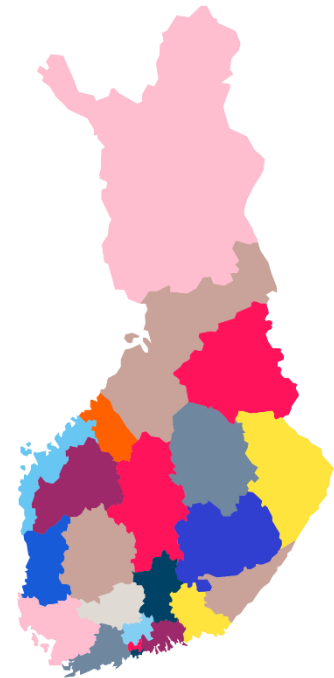
Regional councils

Activities and functions of wellbeing services counties

Healthcare and social welfare services

Individual student welfare

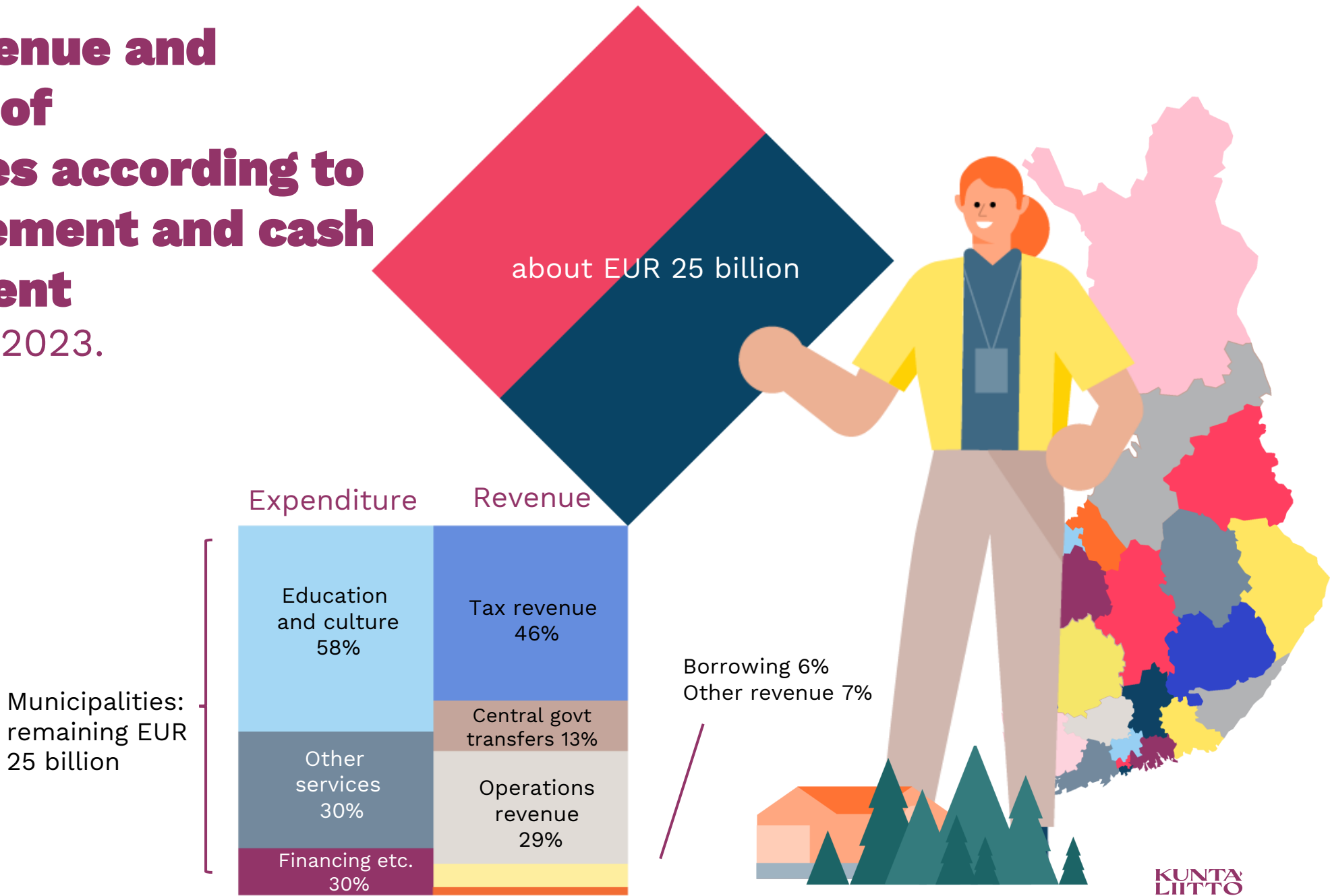
Rescue services



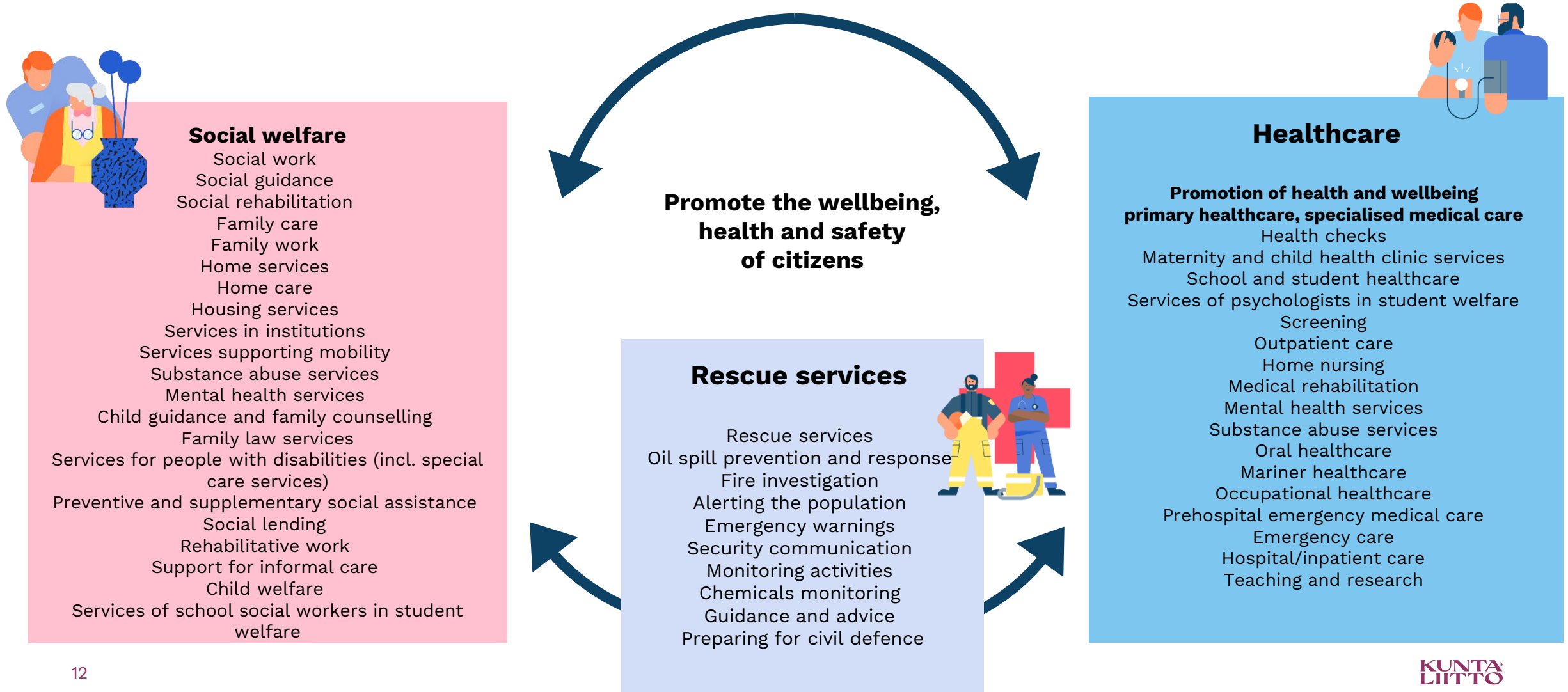
Promotion of health and wellbeing

External revenue and expenditure of municipalities according to income statement and cash flow statement

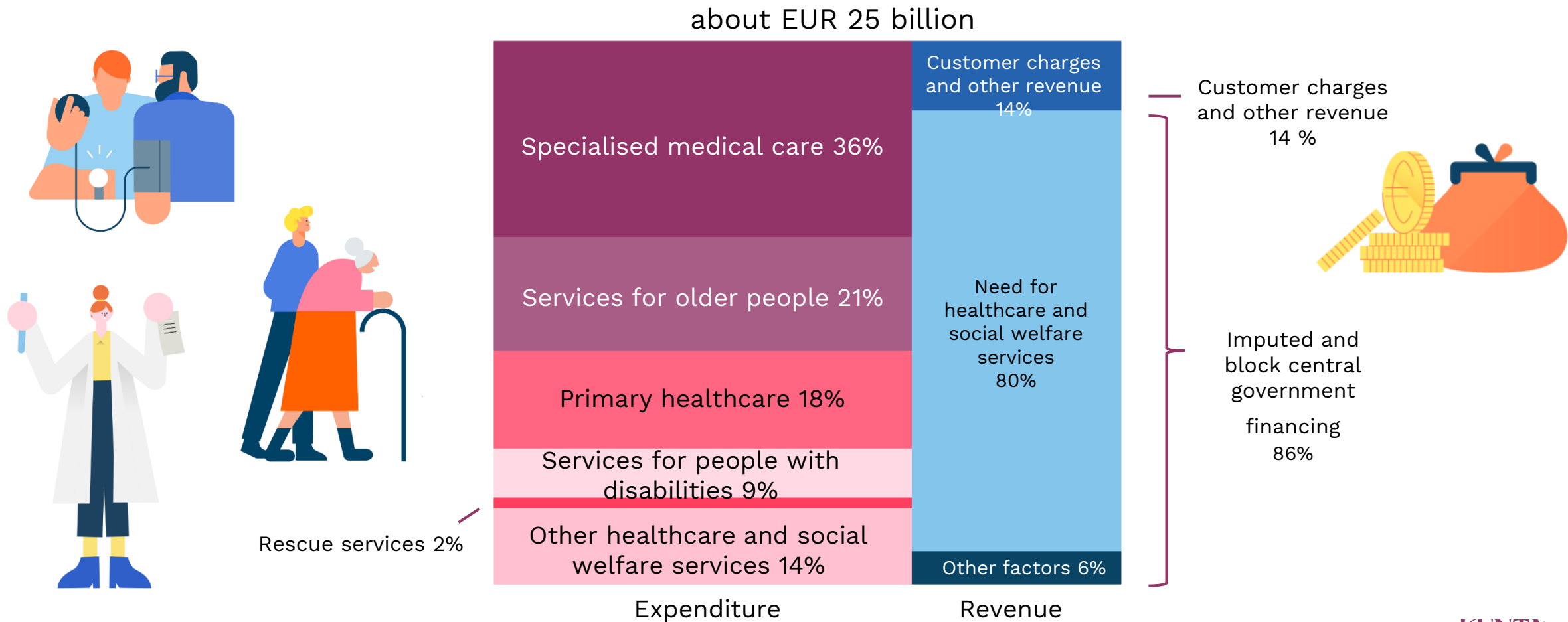
An estimate for 2023.



What will the wellbeing services counties do?



External revenue and expenditure of wellbeing services counties (an estimate for 2023)



AFLRA's support for municipalities and wellbeing services counties in the health and social services reform

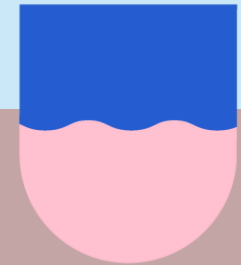
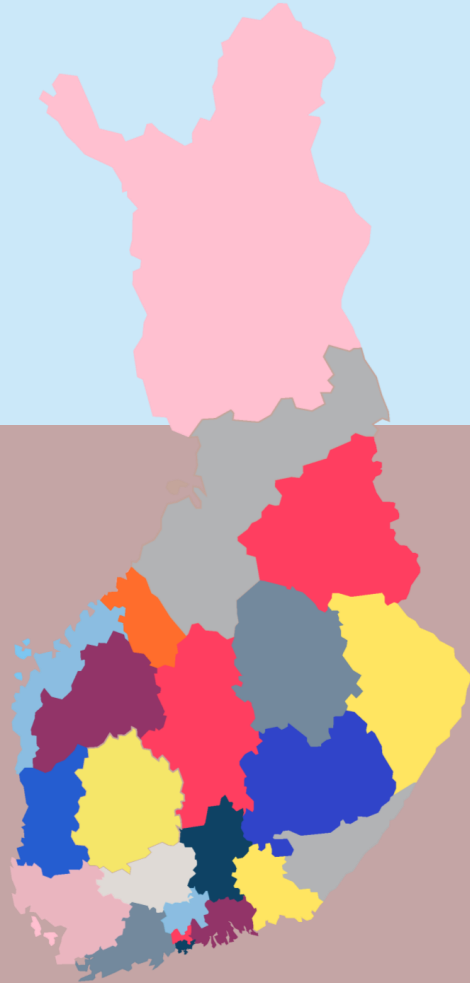


- Establishment of wellbeing services counties
- Transfer of assets and personnel
- The reform's impact on the finances of municipalities and wellbeing services counties
- Service development

Municipalities and wellbeing services counties have the same residents and share many goals

They:

- promote the wellbeing of their residents
- bolster the vitality of their areas
- organise customer-oriented and effective services.



To reach these goals they need to cooperate in many different fields



**Promotion of health
and wellbeing**



**Support for children, young people
and families**



**Employment-promoting
measures**



**Promotion of immigration and
integration**



**Security and preparedness for
disruption**



Building blocks to managing cooperation

Legislative framework and conditions



Legislation defines the functions and guides the implementation of cooperation

However, it leaves room for tailoring the structures and means of cooperation to each county's specific circumstances.

Shared situational picture and information base



Local authorities and the counties should constantly update the situational picture of residents and service needs.

This situational picture is based on the wellbeing reports and plans and the cooperation on them.

Setting and monitoring common objectives



Common objectives are needed for guiding the cooperation. The objectives should be realistic, concrete and measurable.

The objectives and the monitoring of their progress should be documented.

Division of labour and responsibilities



The roles and the division of duties and responsibilities of the parties should be identified and described.

The wellbeing services counties and local authorities should designate responsibility for each area of cooperation.

Agreed models of cooperation



Cooperation also requires mutually agreed rules: how to agree on the objectives and divide responsibilities, and how to change them where needed; how to disseminate information between parties; how to address defects and conflicts.

Forums and areas for cooperation



Regular contacts between the political leaders, senior officeholders, and directors of administrative branches are necessary for successful cooperation. Structures that enable this are required at different levels. Cooperation forums and arenas may be permanent or temporary

Examples of structures and areas of cooperation



Levels of political decision-making

Interaction between the county council and municipal councils (e.g. meetings of chairpersons and deputy chairpersons)

Interaction between other bodies

Common strategic objectives and the monitoring of their progress

Wellbeing reports and plans

Agreements

Provisions of administrative regulations; other agreed forms of cooperation

Management level Working groups

Cooperation forums for the senior managements of municipalities and wellbeing services counties

Working groups of the directors of administrative branches and of service areas.

Matters of common concern

- Preparation
- Development
- Management of cooperation
- Skills development

Expert level Cooperation networks

Cooperation networks of administrative branches

Issues related to cooperation in the administrative branch

- Bringing development needs and trends into focus
- Developing the customer process
- Joint training

Practical and customer level



Well-run services



Links/additional information

- <https://soteuudistus.fi/en/frontpage>
- THL Finnish Institute for Health and Welfare <https://thl.fi/en/web/social-welfare-and-health-care-reform>

The background is a vibrant, abstract composition. A large, bright yellow area occupies the upper left and center, with a diagonal brushstroke of white and red paint running across it. The right side features a complex pattern of red and white splatters, with some blue and orange accents. The text 'KUNTA LIITTO' is centered in a bold, purple, serif font.

KUNTA LIITTO